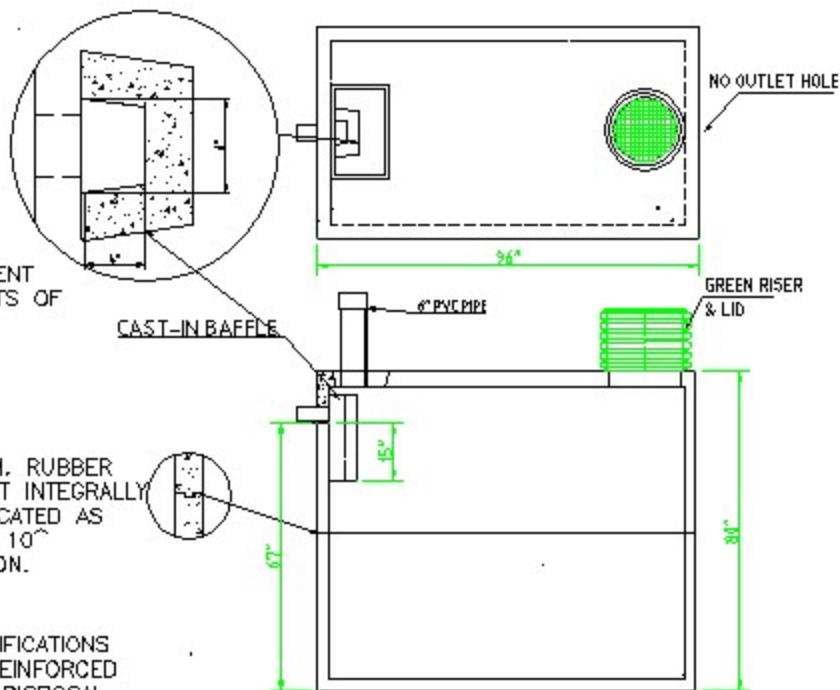


1000 PUMP TANK




DESIGNED TO MEET RESILIENT CONNECTORS REQUIREMENTS OF A.S.T.M. C-923-79

CONCRETE COMPRESSIVE STRENGTH 4000 P.S.I.

A LOK GASKET PER A.S.T.M. RUBBER GASKET SPECS. C413, CAST INTEGRALLY IN MANHOLE WALL AND LOCATED AS REQUIRED. JOINT ALLOWS 10" OMNIDIRECTIONAL DEFLECTION.

SEPTIC TANK DESIGN SPECIFICATIONS CONFORMS TO: PRECAST REINFORCED FOR THE PRIVATE SEWAGE DISPOSAL LICENSING ACT AND CODE (2003) FOR ILLINOIS DEPARTMENT OF PUBLIC HEALTH & MISSOURI DEPARTMENT OF HEALTH

	HANNIBAL CONCRETE PRODUCTS CO. 500 RED DEVIL ROAD HANNIBAL MO 63401		REVISIONS	
	DATE OF MURL SMITH	PHONE NO. 573-821-4845	MODEL NO. 1000 PUMP	BY